

PRODUCT OVERVIEW

HYDRAULIC CONTROL VALVES AND TEST EQUIPMENT



ABOUT US

We are specialist manufacturers of hydraulic measurement and control products helping to improve the productivity of heavy machinery.

For more than 50 years we have been helping customers worldwide in the industrial, mobile, and agricultural sectors to diagnose hydraulic faults, verify hydraulic conditions and achieve repeatable hydraulic control.

Using our Make it BLUE® manufacturing process we help customers maximise the potential of their hydraulic machinery but without the complexity of costly consultancy.

<h1>B</h1> <h2>EGIN</h2> <p>Free-to-access educational material</p>  	<h1>L</h1> <h2>ISTEN</h2> <p>To understand your challenge</p> <p>Component design</p> <p>Customer focus</p> <p>Hydraulic system</p> <p>Blue scorecard</p>   	<h1>U</h1> <h2>PGRADE</h2> <p>3D CAD, rapid prototype and working sample</p>    	<h1>E</h1> <h2>NGINEER</h2> <p>A 'functionally superior' product with a touch of Blue</p>   
<div data-bbox="391 1780 566 1892">  </div> <h2>SUPPORT</h2> <p>Training, advice, repair, recalibration</p> 			

Make it **BLUE**®

HOW TO USE THIS GUIDE

Typical Applications

	Aerospace ground support		Materials handling
	Agricultural		Military
	Automotive		Mining and Quarrying
	CNC machining		Municipal vehicles
	Construction		Oil and Gas
	Forestry		Power plants
	Hydraulic repair and rebuild		Steel and paper mills
	Marine		Truck and Bus

Product Category

FLOW CONTROL TWO-PORT

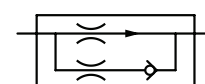
ILFC SERIES

AT A GLANCE



Fixed Flow Pressure Compensated Control Valve

- Maximum Rated Pressure: 210 bar, 3000 psi
- Maximum Rated Flow: 16 L/min, 4 US gpm
- Porting: SAE, BSPP & NPTF
- Materials: Body Materials: Zinc Plated Steel Body
Internal Materials: Steel and Aluminium
- Seals: NBR
- Mounting: In-line



Product image

Full product descriptions and more information can be found online using the QR codes provided.

Product details

Including the Product Series, Product Title, and Product Description.

Hydraulic symbol



HYDRAULIC MEASUREMENT AND CONTROL

HYDRAULIC CONTROL VALVES

FLOW CONTROL TWO-PORT

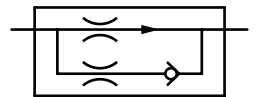
ILFC SERIES

AT A GLANCE



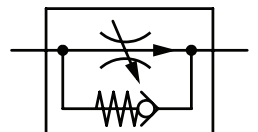
Fixed Flow Pressure Compensated Control Valve

- Maximum Rated Pressure: 210 bar, 3000 psi
- Maximum Rated Flow: 16 L/min, 4 US gpm
- Porting: SAE, BSPP & NPTF
- Materials: Body Materials: Zinc Plated Steel Body
Internal Materials: Steel and Aluminium
Seals: NBR
- Mounting: In-line



Variable Flow Pressure Compensated Control Valve

- Maximum Pressure: 210 bar, 3000 psi
- Maximum Flow: 55 L/min, 15 US gpm
- Porting: SAE, BSPP & NPTF
- Materials: Body Materials: Aluminium
Internal Materials: Carbon Steel
Seals: NBR, PTFE



FLOW CONTROL THREE-PORT

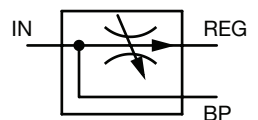
VFD50 SERIES

AT A GLANCE



Variable Priority Flow Dividers

- Maximum Pressure: Up to 250 bar, 3,625 psi
- Total Flow: Up to 50 L/min, 13.2 US gpm
- Maximum Priority (REG) Flow: Up to 30 L/min, 7.9 US gpm
- Porting: BSPP, NPT, Manifold Mount
- Material: Steel components in cast SG Iron body.
Aluminium knob
- Weight: Typically 0.75 kg, 1.65 lbs



FLOW CONTROL THREE-PORT

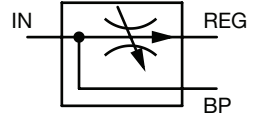
VFD120 SERIES

AT A GLANCE



Variable Priority Flow Dividers

- Maximum Rated Pressure: Up to 420 bar, 6000 psi
- Total Flow: Up to 120 L/min, 32 US gpm
- Maximum Priority (REG) Flow: Up to 95 L/min, 25 US gpm
- Porting: BSPP, SAE, NPT, METRIC
- Material: Steel components in cast Ductile Iron body painted black
Aluminium knob
- Weight: Typically 2.0 kg, 4.4 lbs



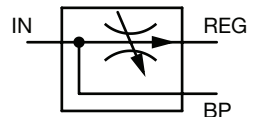
VFD190 SERIES

AT A GLANCE



Variable Priority Flow Dividers

- Maximum Rated Pressure: Up to 420 bar, 6000 psi
- Total Flow: Up to 190 L/min, 50 US gpm
- Maximum Priority (REG) Flow: Up to 150 L/min, 40 US gpm
- Porting: BSPP, SAE
- Material: Steel components in cast Ductile Iron body painted black
Aluminium knob
- Weight: 3.5 to 4.0 kg, 7.7 to 8.8 lbs



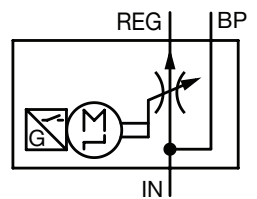
VFD120MD SERIES

AT A GLANCE



Variable Priority Flow Dividers with Remote Proportional Control

- Maximum Rated Pressure: Up to 420 bar, 6000 psi
- Total Flow: Up to 120 L/min, 32 US gpm
- Maximum Priority (REG) Flow: Up to 110 L/min, 30 US gpm
- Porting: BSPP, SAE, NPTF, METRIC
- Material: Steel components in cast Ductile Iron body painted black
Drive Mechanism mounted on aluminium plate and mild steel bracket
- Weight: 2.75 kg, 4.4 lb



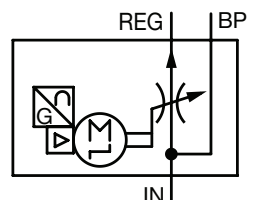
VFD120-E SERIES

AT A GLANCE



Variable Priority Flow Dividers with Electric Motor Drive

- Maximum Rated Pressure: Up to 420 bar, 6000 psi
- Total Flow: Up to 120 L/min, 32 US gpm
- Maximum Priority (REG) Flow: Up to 110 L/min, 30 US gpm
- Porting: BSPP, SAE, NPTF, METRIC
- Material: Steel components in cast Ductile Iron body painted black
Drive Mechanism mounted on aluminium plate and mild steel bracket
- Weight: 2.75 kg, 4.4 lb



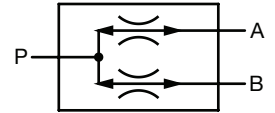
FLOW CONTROL THREE-PORT

FDC60 SERIES

AT A GLANCE

Flow Divider
Combiner

- Maximum Rated Pressure: Up to 310 bar, 4,500 psi
- Maximum Rated Flow: Up to 70 L/min, 18 US gpm
- Ambient Temperature Range: -30 to 100°C, -22 to 212°F
- Fluid Temperature Range: -30 to 100°C, -22 to 212°F
- Compatible Fluids: Mineral oils to ISO 11158. Other fluids consult sales office
- Accuracy: +/- 2.0% of valve rated maximum flow

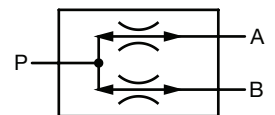


FDC140 SERIES

AT A GLANCE

High Flow
Divider Combiner

- Maximum Rated Pressure: 420 bar, 6000 psi
- Maximum Total Flow: Up to 140 L/min, 37 US gpm
- Ambient Temperature Range: -30 to 100 °C, -22 to 212 °F
- Fluid Temperature Range: -30 to 100 °C, -22 to 212 °F
- Hydraulic Fluid: Mineral & Synthetic oils. For other fluid types contact sales
- Accuracy/ Tolerances: +/- 1.5% of valve rated maximum flow

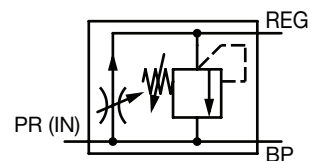


RV, CK & M SERIES

AT A GLANCE

Variable Priority Flow Dividers with
Built in Relief or Check Valve

- Maximum Rated Pressure: Up to 250 bar, 3630 psi
- Maximum Rated Flow: Up to 114 L/min, 30 US gpm
- Compatible Fluids: Other fluids consult sales office
- Porting: BSPP, NPTF, SAE, METRIC
- Material: Body Materials: Cast Iron, Aluminium knob
Internal Materials: Steel components
- Weight: 3.5 kg, 7.7 lbs

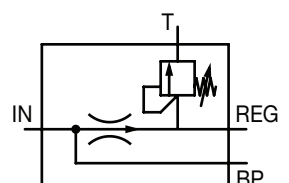


FV120 / 200

AT A GLANCE

Fixed and proportional
flow divider valves

- Maximum Rated Pressure: Up to 420 bar, 6000 psi
- Maximum Flow Capacity: 76 L/min, 20 US gpm
- Porting: BSPP, SAE
- Material: Steel components in cast iron body
- Weight: 1.6 kg, 3.5 lb
- Mounting: 2 Bolts, M8 or 5/16"



MONOBLOCK

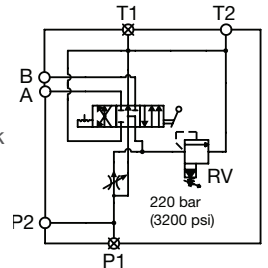
CV120 SERIES

AT A GLANCE



Combination Valve - Variable Priority flow divider with Directional Control

- Maximum Rated Pressure: Up to 250 bar, 3600 psi
- Total Flow Capacity: 120 L/min, 32 US gpm
- Regulated Flow Capacity: Up to 95 L/min, 25 US gpm
- Porting: BSPP, SAE
- Material: Steel components in cast Ductile Iron body painted black
Aluminium knob
- Weight: 8.9 kg, 19.5 lb



DIRECTIONAL ZERO-LEAK

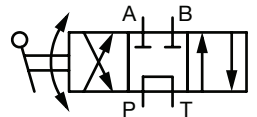
180 SERIES

AT A GLANCE



Rotary Shear Directional Control Valve

- Maximum Rated Pressure: Up to 700 bar, 10,000 psi
- Maximum Rated Flow: Up to 38 L/min, 10 US gpm
- Ambient Temperature: -20 to 50°C, -4 to 122°F
- Media Temperature: -30 to 120°C, -22 to 248°F
- Porting: BSPP, SAE, NPTF, Manifold Mount
- Material: Body Materials: Aluminium, Phenolic resin knob.
Internal Materials: Carbon Steel
Seal: NBR



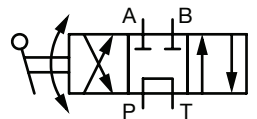
280 SERIES

AT A GLANCE



Stainless Steel Rotary Direction Control Valve for Hydraulics in a Harsh Environment

- Maximum Rated Pressure: Up to 700 bar, 10,000 psi
- Maximum Rated Flow: Up to 38 L/min, 10 US gpm
- Ambient Temperature: -20 to 50°C, -4 to 122°F
- Media Temperature: -30 to 120°C, -22 to 248°F
- Porting: BSPP, NPTF, SAE, Manifold Mount
- Material: Body Materials: Stainless Steel, Phenolic resin knob.
Internal Materials: Carbon Steel
Seal: NBR



DIRECTIONAL SPOOL TYPE

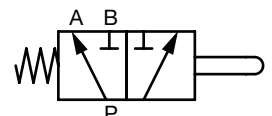
SV80 SERIES

AT A GLANCE



Diverter Valve

- Maximum Rated Pressure: Up to 210 bar, 3000 psi
- Maximum Rated Flow: Up to 80 L/min, 21 US gpm
- Compatible Fluids: Mineral oils to ISO 11158. Other fluids consult sales office
- Material: Internal Material: Stainless Steel
Body Material: Cast Iron
- Porting: BSPP, SAE
- Weight: 2 kg, 4.4 lb



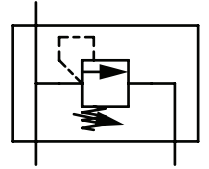
PRESSURE RELIEF

RV5

AT A GLANCE

**Pressure Relief Valve**

- Maximum Pressure: Up to 276 bar, 4000 psi
- Maximum Flow: Up to 70 lpm, 18 US gpm
- Porting: 3/4" BSPP
- Material: Body Materials: High Tensile Aluminium
Internal Materials: Steel
Cartidge: Steel
- Weight: 0.73 kg, 1.6 lb
- Mounting: One 8.7mm x 40mm, 0.343" x 1.575" Mounting Hole





HYDRAULIC MEASUREMENT AND CONTROL

INDUSTRIAL CONDITION MONITORING

FLOW AND TEMPERATURE

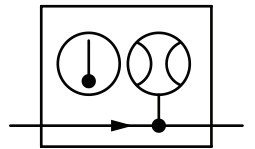


FI750 SERIES

In-Line Flow Indicator

- Maximum Rated Pressure: Up to 420 bar, 6,000 psi
- Maximum Rated Flow: Up to 180 L/min, 48 US gpm
- Ambient Temperature: -10 to 50°C, 14 to 122°F
- Porting: BSPP, NPSF, SAE
- Material: Body Material: Aluminium 2011T6
Internal Material: Mainly Brass
Seal: FKM
- Weight: 1.4 kg, 3.1 lbs

AT A GLANCE

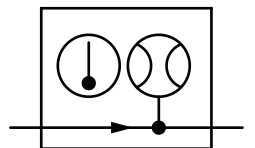


FI1500 SERIES

In-Line Flow Indicator

- Maximum Rated Pressure: Up to 350 bar, 5000 psi
- Maximum Rated Flow: Up to 400 L/min, 100 US gpm
- Ambient Temperature: -10 to 50°C, 14 to 122°F
- Porting: BSPP, SAE
- Material: Body Materials: Aluminium 2011T6
Internal Materials: Mainly Brass
Seals: FKM
- Weight: 3.2 kg, 7 lb

AT A GLANCE

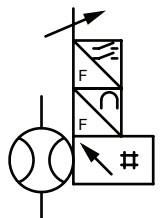


FLOWHUB SERIES

Flow, Temperature, Measure, Display, Switch, Transmit

- Maximum Rated Pressure: 420 bar, 6000 psi
- Maximum Rated Flow: 360 L/min, 95 US gpm
- Ambient Temperature Range: 0 to 50°C, 32 to 122°F
- Fluid Temperature Range: 5 to 90°C, 41 to 194°F
- Porting: Male BSPP, Male SAE JIC
- Material: Body Materials: Aluminium
Internal Materials: Brass, Stainless Steel, Carbon Steel

AT A GLANCE



FLOW AND TEMPERATURE

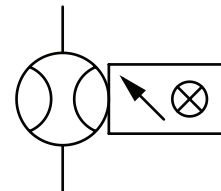
WP SERIES

AT A GLANCE



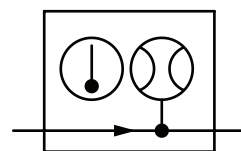
Hydraulic Flow Monitor

- Maximum Rated Pressure: Up to 420 bar, 6000 psi
- Maximum Rated Flow: Up to 550 L/min, 150 US gpm
- Maximum Rated Temperature: 116°C, 240°F
- Accuracy: $\pm 2.0\%$ of full scale (-BI code $\pm 0.4\%$ of full scale)
- Porting: BSPP, NPTF, SAE
- Material: Body Materials: Aluminium, Brass or Stainless Steel
Internal Materials: Stainless Steel



Reversible Flow Indicator

- Maximum Rated Pressure: Up to 420 bar, 6000 psi
- Maximum Rated Flow: Up to 200 L/min, 54 US gpm
- Ambient Temperature: -10 to 50°C, 14 to 122°F
- Porting: BSPP, SAE
- Material: Body Materials: Aluminium 2011T6
Internal Materials: Stainless Steel, Brass
Seals: NBR, FKM
- Weight: 2.0 kg, 4.4 lb



PRESSURE

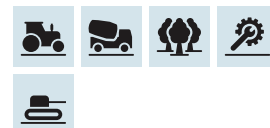
J1939 SERIES

AT A GLANCE



SAE J1939 CAN compatible sensors for hydraulic system monitoring

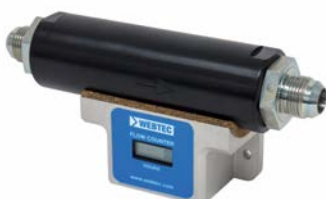
- Maximum Rated Pressure: 480 bar, 7000 psi
- Maximum Flow: 1500 L/min, 400 US gpm
- Ambient Temperature Range: 5 to 40°C, 41 to 104°F
- Fluid Temperature Range: 5 to 90°C, 41 to 194°F continuous use
- Compatible Fluid: Mineral oils to ISO 11158.
Other fluids consult sales office.
- Accuracy/Tolerances: Reading 15% to 100% of flow range - 1% of indicated reading. Readings below 15% of full scale flow - fixed accuracy of 0.15% of full scale (CT15 is 1% of full scale).



HYDRAULIC USAGE

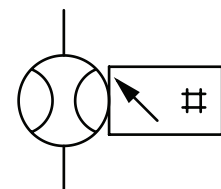
RFS200

AT A GLANCE



Flow Hours Counter

- Maximum Rated Pressure: Up to 420 bar, 6,000 psi
- Maximum Rated Flow: Up to 200 L/min, 52 US gpm
- Ambient Temperature Range: -20 to 50°C, -4 to 122°F
- Fluid Temperature Range: -20 to 100°C, -4 to 212°F
- Compatible fluid: Mineral oils to ISO 11158. Other fluids consult sales office.
- Porting: BSPP, SAE





HYDRAULIC MEASUREMENT AND CONTROL

PORTABLE HYDRAULIC TESTERS

MECHANICAL HYDRAULIC TESTERS

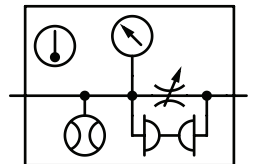
RFIK SERIES

AT A GLANCE



Mechanical Hydraulic Tester

- Maximum Rated Pressure: Up to 420 bar, 6090 psi
- Maximum Flow: Up to 270 L/min, 70 US gpm
- Ambient Temperature Range: -10 to 50°C, 14 to 122°F
- Fluid Temperature Range: 20 to 80°C, 68 to 176°F
- Compatible Fluids: Mineral oils, Other fluids consult sales office
- Accuracy: Flow: $\pm 4\%$ FS
Pressure: $\pm 1.6\%$ FS
Temperature: $\pm 2.5\text{ }^{\circ}\text{C}$, $\pm 5\text{ }^{\circ}\text{F}$



DIGITAL HYDRAULIC TESTERS

DHT 1 SERIES

AT A GLANCE



Digital Hydraulic Tester

- Maximum Rated Pressure: Up to 480 bar, 7000 psi
- Maximum Rated Flow: Up to 800 L/min, 210 US gpm
- Ambient Temperature: 5 to 40°C, 41 to 104°F
- Compatible Fluid: Mineral oils to ISO 11158. Other fluids consult sales office.
- Accuracy: Flow: $\pm 1\%$ full scale
Pressure: $\pm 1.6\%$ full scale
Temperature: $\pm 1\text{ }^{\circ}\text{C}$, $\pm 2\text{ }^{\circ}\text{F}$
- Porting: BSPP, SAE



DIGITAL HYDRAULIC MULTIMETERS

DHM 4 SERIES

AT A GLANCE



Digital Hydraulic Multimeter

- Maximum Rated Pressure: Up to 480 bar, 7000 psi
- Maximum Rated Flow: Up to 800 L/min, 210 US gpm
- Ambient Temperature: 5 to 40°C, 41 to 104°F
- Compatible Fluid: Mineral oils to ISO 11158. Other fluids consult sales office.
- Porting: BSPP, SAE
- Material: Case: Powder coat painted Mild Steel
Flow Block: High tensile aluminium
Seal: FKM





HYDRAULIC MEASUREMENT AND CONTROL

HYDRAULIC DATALOGGERS

DATALOGGERS

HPM110 SERIES

AT A GLANCE



Digital Pressure Gauge

- Maximum Rated Pressure: Up to 600 bar, 8700 psi
- Ambient Temperature Range: -10 to 50 °C, 14 to 144 °F
- Fluid Temperature Range: -20 to 80 °C, 4 to 176 °F
- Compatible Fluids: oil, water, other fluids consult sales office
- Accuracy/ Tolerances: $\pm 0.5\%$ Full Scale
- Porting: BSPP, SAE



HPM4000 SERIES

AT A GLANCE

Hydraulic Data Logger

- Operating Temperature Range: 0 to 50°C, 32 to 122°F
- Power Supply: Input 100 - 240 VAC
- Connection Type: Micro-USB socket, Type B, +5 VDC max 1000mA
- Battery: Lithium Ion pack 3.7 VDC, 4500 mAh
- Battery life: With 2 sensors >8 hours
- Degree of Protection: IP67 (EN60529)



HPM7000 SERIES

AT A GLANCE

Hydraulic Data Logger

- Ambient Temperature: -10 to 50 °C, 14 to 122 °F
- Memory: 12GB
- Ports: USB device (data transmission between device and PC)
USB host 1 (connection with external storage media)
USB host 2 (connection with external storage media)
LAN (connection with network cable)
- Material: Body materials: ABS/PC (thermoplastic)
Body Protective Materials: TPE (thermoplastic elastomer)
- Weight: 1.88 kg, 4.1 lb (without input modules)
- Mounting: Carrying Strap, Folding Stand and VESA, standard 100 x 100 mm / M4 metric



DATALOGGERS - KITS

OEMS WORLDWIDE

AT A GLANCE



Custom Hydraulic Test Kits

- Customised kits and sizes for your needs
- Easy to transport
- Rugged, durable, waterproof and airline approved
- Renowned and internationally recognised Pelican™ case brand
- Wheels and carry handle on larger cases
- Custom and branded kits available



SENSORS FOR DATALOGGERS

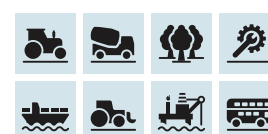
PRESSURE / TEMPERATURE SENSORS

AT A GLANCE



SR & Intelligent Digital (CANopen) sensors and accessories for use with HPM Series

- Maximum Rated Pressure: 1000 bar, 14,500 psi
- Ambient Temperature Range: -25 to 85°C, -13 to 185°F
- Fluid Temperature Range: -25 to 105°C, -13 to 221°F continuous use
- Compatible Fluid: Mineral oils to ISO 11158. Other fluids consult sales office
- Accuracy/Tolerances: Pressure: $\pm 0.5\%$ full scale
Temperature: $\pm 3^\circ\text{C}$, 5.4°F (SR-PTT-* ONLY)
- Porting: Supplied with M16 x 2 test point connector rated to a maximum pressure of 630 bar, 9100 psi and a 'live' connection pressure of 400 bar, 5800 psi or less



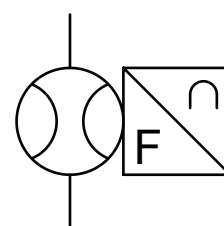
CT FOR HPM SERIES

AT A GLANCE



Turbine Flow Meters

- Maximum Rated Pressure: 480 bar, 7000 psi
- Maximum Flow: 1500 L/min, 400 US gpm
- Ambient Temperature Range: -10 to 50°C, 14 to 122°F
- Fluid Temperature Range: -20 to 90°C, -4 to 194°F continuous use
- Compatible Fluid: Mineral oils to ISO 11158. Other fluids consult sales office.
- Porting: BSPP, SAE



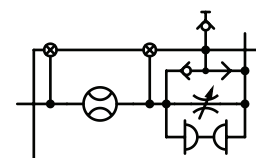
CTR FOR HPM SERIES

AT A GLANCE



Turbine Flow Meters with Built-In Loading Valve

- Maximum Rated Pressure: 480 bar, 7000 psi
- Maximum Flow: 750 L/min, 200 US gpm
- Ambient Temperature Range: -10 to 50°C, 14 to 122°F
- Fluid Temperature Range: -20 to 90°C, -4 to 194°F continuous use
- Compatible Fluid: Mineral oils to ISO 11158. Other fluids consult sales office.
- Porting: BSPP, SAE





HYDRAULIC MEASUREMENT AND CONTROL

TEST STAND INSTRUMENTATION

HYDRAULIC DATA ACQUISITION

C2000

AT A GLANCE



Hydraulic Data Acquisition System



- Modular 8-64 inputs
- Runs using Windows(TM) compatible software
- Hydraulic test solution
- Print test Certificates
- TCP/IP network ready
- Dedicated high-speed controller

FLOW

GF SERIES

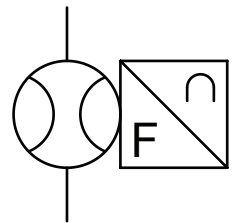
AT A GLANCE



Positive Displacement Flow Meters with Conditioned Output



- Maximum Rated Pressure: 420 bar, 6,000 psi
- Maximum Rated Flow: 150 L/min, 40 US gpm
- Fluid Temperature Range: -40 to 120°C, -40 to 284°F
- Compatible Fluids: Mineral oils to ISO 11158. Other fluids consult sales office.
- Porting: BSPP, SAE
- Material: Body Materials: Stainless Steel
Internal Materials: Stainless Steel
Seals: NBR (Other seals consult sales office)

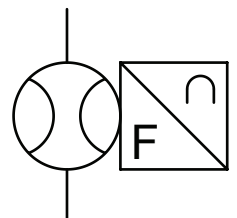


CT SERIES

AT A GLANCE

Turbine Flow Meters with Conditioned Output

- Maximum Rated Pressure: 480 bar, 6,960 psi
- Maximum Flow: 1,500 L/min, 396 US gpm
- Ambient Temperature Range: 5 to 40°C, 41 to 104°F
- Fluid Temperature Range: 5 to 90°C, 41 to 194°F
- Compatible Fluids: Mineral oils to ISO 11158. Other fluids consult sales office.
- Porting: BSPP, SAE



FLOW

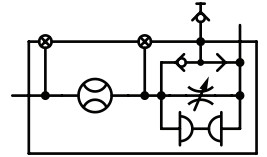
CTR SERIES

AT A GLANCE



Turbine Flow Meters with Conditioned Output and Built-in Loading Valve

- Maximum Rated Pressure: 480 bar, 7,000 psi
- Maximum Rated Flow: 800 L/min, 210 US gpm
- Ambient Temperature Range: 5 to 40°C, 41 to 104°F
- Fluid Temperature Range: 5 to 90°C, 41 to 194°F
- Compatible Fluids: Mineral oils to ISO 11158. Other fluids consult sales office.
- Porting: BSPP, SAE



PRESSURE, TEMPERATURE & SPEED

APM ADVANCED PANEL METERS

AT A GLANCE



Digital process meters for analogue sensors

- Combined digital and bar graph display
- USB port for custom user settings
- Warning flash backlight
- Less than 53mm deep
- Display Range (Both Min & Max values)
- Two independent outputs or 4-20mA analogue monitor outputs



WIKA-A-10 TYPE

AT A GLANCE

Pressure Transducers

- Maximum Rated Pressure: Up to 600 bar, 10,000 psi
- Operating Temperature Range: -40 to 100°C, -40 to 212°F
- Accuracy: $\leq \pm 1\%$ Full Scale
- Material: Body Materials: Stainless Steel 316L, HNBR, PA
Internal Materials: Stainless steel 316L and PH steel
Materials: FKM
- Weight: 0.080 kg, 0.18 lbs
- Mounting: BSPP, SAE



SP-TTL SERIES

AT A GLANCE

Magnetic Speed Pickup with Conditioned Output

- Ambient Temperature range: -5 to 40°C, 41 to 104°F
- Weight: 0.25kg, 0.55 lb
- Supply voltage (VS): 12 - 32 VDC
- Pulse output: 0 - 5 V square wave, minimum load 600 ohms
- Connection type: M12x1 5 pin
- Main Body: Steel 212A42 electroless nickel plated
Lid: Aluminium 2011 T3 electroless nickel plated
Treaded section: Steel 212A42 electroless nickel plate





Temperature Sensors



- Maximum Rated Pressure: 480 bar, 7,000 psi
- Ambient Temperature: 5 to 40°C, 41 to 104°F
- Fluid Temperature Range: 0 to 125°C, 32 to 257°F
- Scaled Range: 0 to 150°C, 32 to 302°F
- Accuracy: $\pm 1^\circ\text{C}$, $\pm 2^\circ\text{F}$
- Compatible Fluids: Mineral oils to ISO 11158. Other fluids consult sales office



HYDRAULIC MEASUREMENT AND CONTROL

MOBILE CONDITION MONITORING

FLOW AND TEMPERATURE

CTA SERIES

NEW

AT A GLANCE



Automotive Ready Hydraulic System Flow Monitor with J1939 Interface

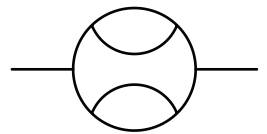


Rugged, resilient hydraulic oil flow and temperature monitors designed for permanent installation in mobile machinery.

Ideal for on and off-highway machinery to monitor hydraulic system performance. Suitable for closed loop control, real-time diagnostics, safety interlocks and inclusion in predictive maintenance / IoT systems to reduce down-time or enable autonomous vehicle operation.

Designed to meet the standards for components fitted to heavy duty vehicle applications, the meters have a J1939 CAN-bus interface for easy integration

- Flows from 8 - 300 L/min, 2 - 80 USgpm
- Pressure: up to 420 bar, 6000 psi
- Output: J1939 reporting flow and temperature
- Calibration: 21cSt as standard, other viscosities possible
- Deutsch automotive connector
- Ingress protection: IP69K
- Tested to SAE J1455, ISO 11451, CISPR 25 and SAE J1113-13



PRESSURE

J1939 SERIES

AT A GLANCE



SAE J1939 CAN compatible sensors for hydraulic system monitoring



- Maximum Rated Pressure: 480 bar, 7000 psi
- Maximum Flow: 1500 L/min, 400 US gpm
- Ambient Temperature Range: 5 to 40°C, 41 to 104°F
- Fluid Temperature Range: 5 to 90°C, 41 to 194°F continuous use
- Compatible Fluid: Mineral oils to ISO 11158. Other fluids consult sales office.
- Accuracy/Tolerances: Reading 15% to 100% of flow range - 1% of indicated reading. Readings below 15% of full scale flow - fixed accuracy of 0.15% of full scale (CT15 is 1% of full scale).



HYDRAULIC MEASUREMENT AND CONTROL

HYDRAULIC ACCESSORIES

ACCESSORIES



PT SERIES

Custom Pressure Test Kits

- Custom built to your specification - pick and mix from huge range
- The kit includes gauges, hoses, test points and adaptors
- Provides a complete test system for rapid pressure testing
- Pressure test points can be fitted anywhere in the circuit for instant pressure checks saving installation costs of piping and gauges
- Test hoses can be connected by hand under full system pressure without loss of oil or ingress of dirt. Ideal for taking oil samples and bleeding air
- The case provides ample storage. The gauge panel can be removed for convenient use while testing.



AT A GLANCE



63 MM DIAMETER

Pressure Gauges

- Bottom or centre back connection
- Glycerine filled
- 1/4" BSPP connection



AT A GLANCE



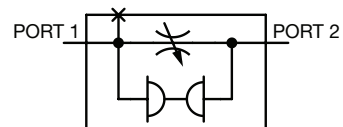
HV SERIES

Loading Valves

- Maximum Rated Pressure: 420 bar, 6,000 psi)
- Maximum Rated Flow: Up to 800 L/min, 210 US gpm
- Ambient Temperature: 5 to 40°C, 59 to 104°F
- Fluid Temperature Range: 0 to 120°C, 32 to 248°F
- Compatible Fluids: Mineral oils to ISO 11158. Other fluids consult sales office
- Porting: BSPP, SAE



AT A GLANCE





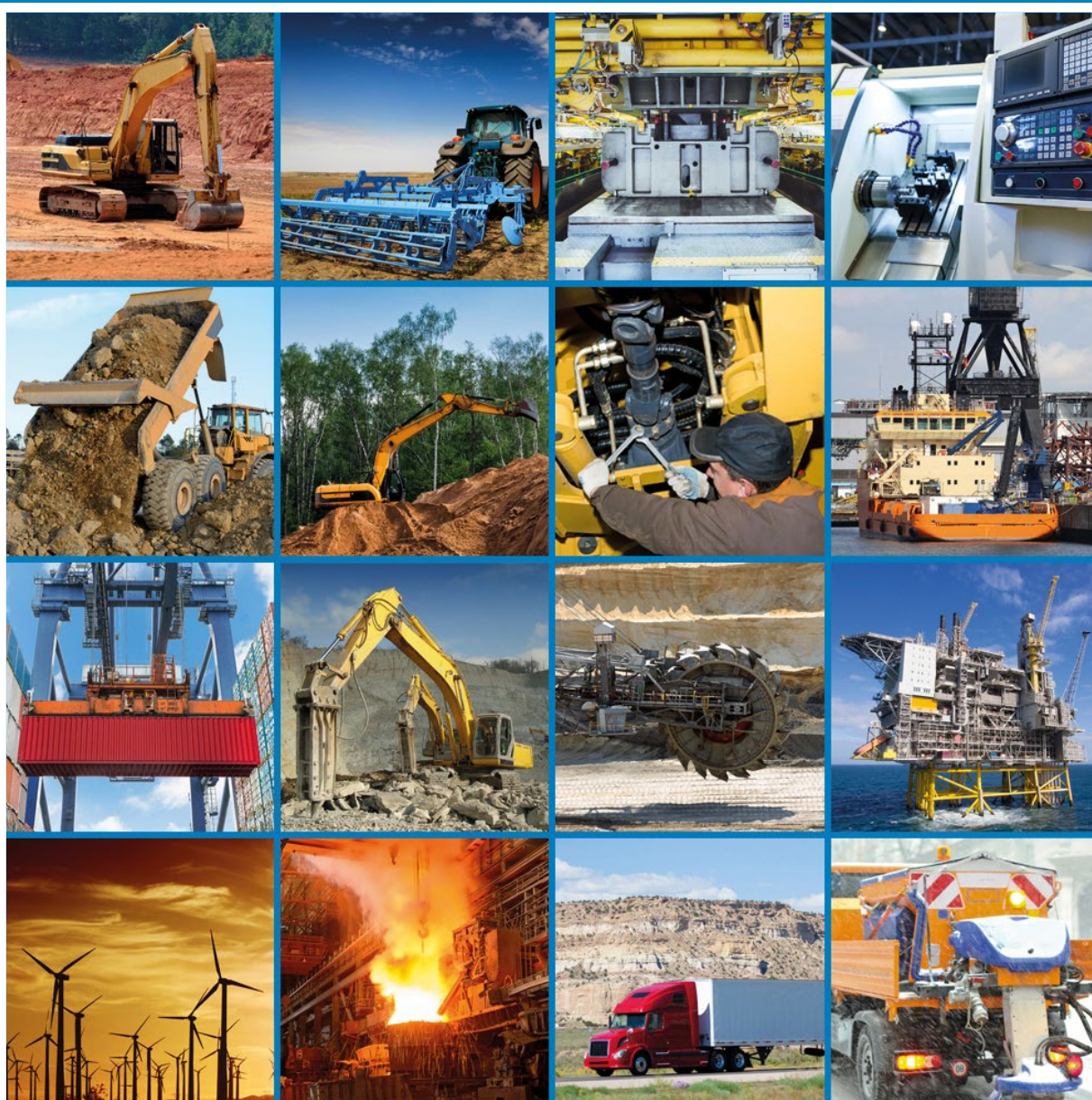
Safety Burst Discs

- Guaranteed to rupture within the specified pressure range.
- Protects the load valve from accidental overpressurisation.
- Easy installation allowing side or top connections
- Fast and easy to replace.



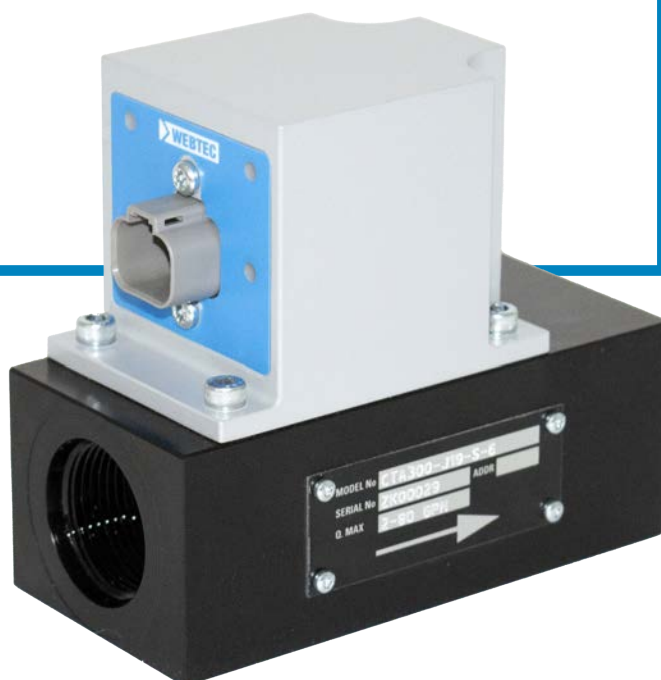
APPLICATIONS AND INDUSTRY SECTORS

Aerospace ground support	Materials handling
Agricultural	Military
Automotive	Mining and Quarrying
CNC machining	Municipal vehicles
Construction	Oil and Gas
Forestry	Power plants
Hydraulic repair and rebuild	Steel and paper mills
Marine	Truck and Bus



Webtec reserve the right to make improvements and changes to the specification without notice

Your local distributor



Webtec Products Limited

St. Ives, Cambridgeshire, PE27 3LZ, UK
Tel: +44 (0) 1480 397 400
sales-uk@webtec.com

Webtec LLC

1290 E. Waterford Ave, St. Francis, WI 53235 U.S.A.
Tel: +1-414-769-6400
sales-us@webtec.com

Webtec (Europe) GmbH

Bonner Strasse 2m, 51379 Leverkusen, Germany
Tel: +49 (0) 2171 – 79 14 910
sales-eu@webtec.com

Webtec (Hong Kong) Ltd.

Room1109, CRE Centre, 889 Cheung Sha Wan Road, Cheung Sha Wan, Kowloon, Hong Kong
Tel: +85230183090
sales-hk@webtec.com

www.webtec.com